



GAT MONTHLY MEMBERSHIP PROGRESS REPORT

Results as of: 2/28/2023

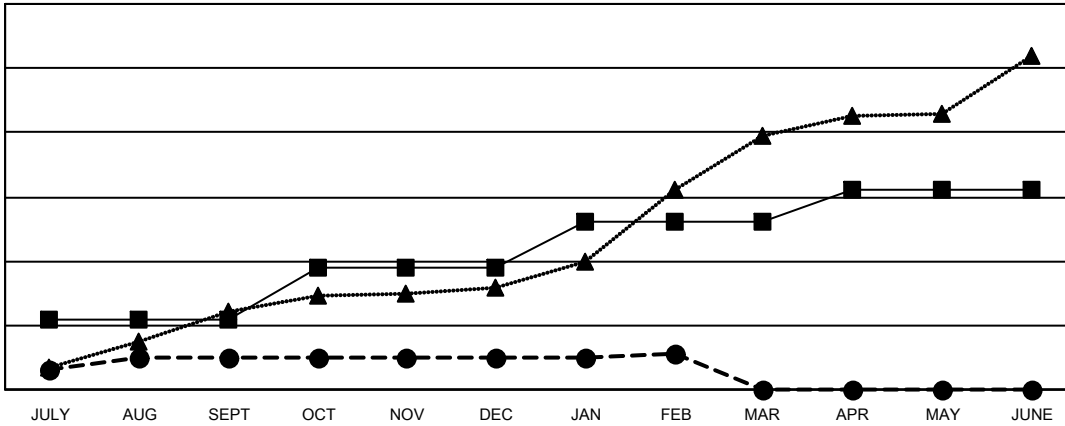
Multiple District 3233

LOCATION: INDIA

Clubs			
RESULTS FOR 2022-2023			
QUARTER	NEW CLUB GOAL	NEW CLUBS	DROPPED CLUBS
JULY/AUG/SEPT	22	10	12
OCT/NOV/DEC	16	0	63
JAN/FEB/MAR	14	1	9
APR/MAY/JUNE	10	0	0

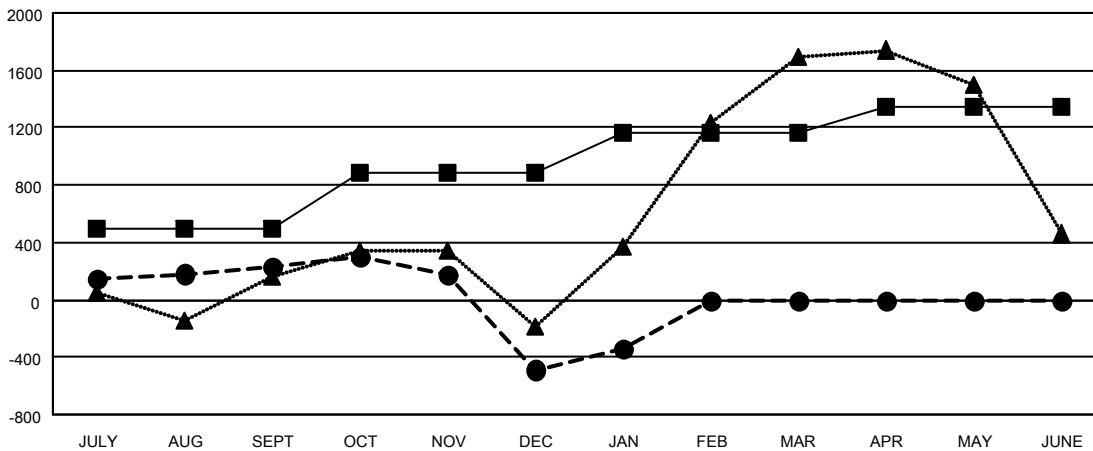
Members			
RESULTS FOR 2022-2023			
QUARTER	MEMBER GROWTH NET GOAL	MEMBER GROWTH ACTUAL	DROPPED MEMBERS ACTUAL (including transfers)
JULY/AUG/SEPT	495	989	638
OCT/NOV/DEC	395	416	1,094
JAN/FEB/MAR	280	662	112
APR/MAY/JUNE	180	0	0

GOALS AND ACTUAL NEW CLUBS CUMULATIVE



- - CURRENT YEAR GOALS FOR NEW CLUBS
- - CURRENT YEAR ACTUAL NEW CLUBS
- ▲ - LAST YEAR ACTUAL NEW CLUBS

GOALS AND ACTUAL MEMBERS CUMULATIVE



- - MEMBER GROWTH NET GOAL
- - MEMBER GROWTH ACTUAL
- ▲ - LAST YEAR MEMBERSHIP ACTUAL

DROPPED CLUBS: 84	343 CLUBS OF 862 ADDED 1 OR MORE NEW MEMBERS	GENDER DISTRIBUTION
DROPPED MEMBERS	CLICK HERE FOR CUMULATIVE MEMBERSHIP DATA	MALE 14,018 (67.06%)
DECEASED 32		FEMALE 6,871 (32.87%)
CLUB CANCELLED 629		NON BINARY 1 (0.00%)
OTHER 1,183		PREFER NOT TO ANSWER 15 (0.07%)
TOTAL 1,844		TOTAL FAMILY UNIT MEMBERS 10,133
		FAMILY MEMBERS PAYING HALF DUES 5,953